

## Theme 2 Jobs, Skills & Prosperity

### MSG Programme Period 4 (Jul-Sep 2016) Performance Report

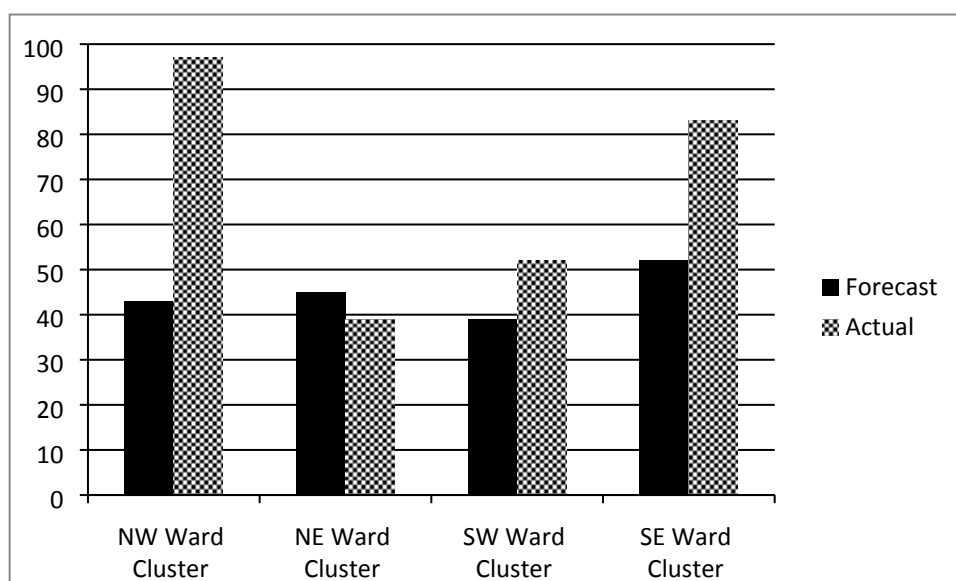
**Theme 2 – Jobs, Skills & Prosperity:** This theme focuses on seeking key outcomes including:

- Measurable increase in the numbers of people moved closer to the labour market and prepared for sustained employment.
- Reduce the numbers of residents in the borough with no qualifications or training
- Improved integration of pathway to work employment support services
- Reduction in numbers of residents negatively impacted by welfare reforms
- Minimisation of the number of residents facing housing repossessions
- Increase in the numbers of residents supported with addressing problem debts
- Increases in number of residents on low incomes receiving their correct benefit /tax credit entitlement
- Empowering residents and building resilience

### Routeways to Employment

#### Geographical Breakdown

The table below shows the number of beneficiaries supported during the period July to September 2016 by Ward Cluster:



| NW Ward Cluster   | NE Ward Cluster  | SW Ward Cluster   | SE Ward Cluster  |
|---|--|---|--|
| <ul style="list-style-type: none"> <li>• Bethnal Green</li> <li>• Spitalfields &amp; Banglatown</li> <li>• St Peter's</li> <li>• Weavers</li> </ul> | <ul style="list-style-type: none"> <li>• Bow East</li> <li>• Bow West</li> <li>• Bromley North</li> <li>• Bromley South</li> <li>• Mile End</li> </ul> | <ul style="list-style-type: none"> <li>• Shadwell</li> <li>• St Dunstons</li> <li>• St Katherine's &amp; Wapping</li> <li>• Stepney Green</li> <li>• Whitechapel</li> </ul> | <ul style="list-style-type: none"> <li>• Blackwall &amp; Cubitt Town</li> <li>• Canary Wharf</li> <li>• Island Gardens</li> <li>• Lansbury</li> <li>• Limehouse</li> <li>• Poplar</li> </ul> |

**Routeways to Employment Project Portfolio – D&R**

| No. of live projects – Jul-Sep 16 | No. of projects classed as <b>GREEN</b> | No. of projects classed as <b>AMBER</b> | No. of projects classed as <b>RED</b> |
|-----------------------------------|---|---|---------------------------------------|
| 9                                 | 8                                       | 1                                       | 0                                     |

There 9 active projects in this category; 8 of which are classed as 'Green' and are on course to meet the agreed expenditure targets, service outputs and outcomes as indicated in monitoring reports received.

1 project classed as Amber:

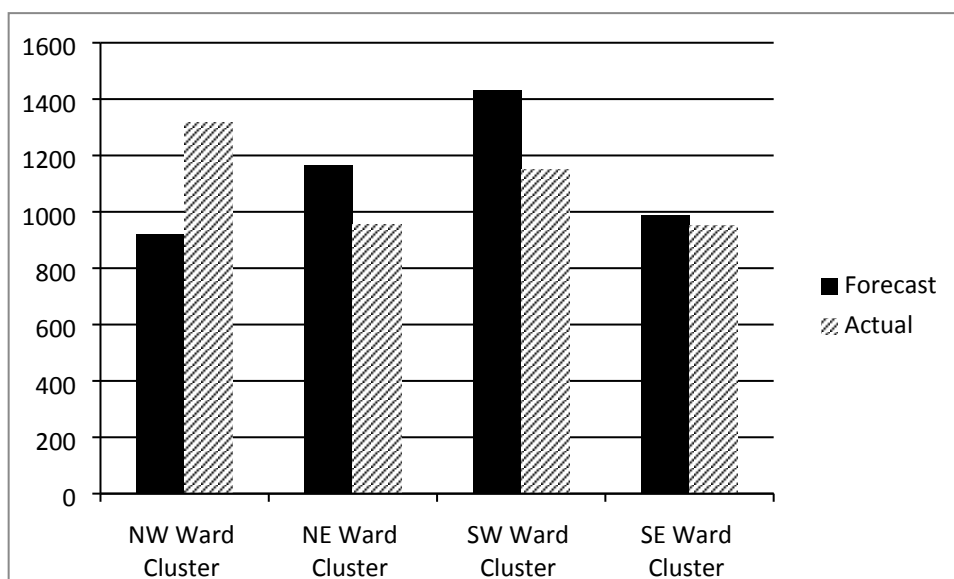
**DeafPLUS – Employment for Deaf and Disabled people in Tower Hamlets (EDITH)**

Under performance on outputs due to late start and staffing issues. Project is now fully staffed and significant improvement is expected in the coming months. Still on course to achieve all targets by the end of the project.

**Social Welfare Advice Services**

**Geographical Breakdown**

The table below shows the number of beneficiaries supported during the period July to September 2016 by Ward Cluster:



## Appendix 4.2

| NW Ward Cluster   | NE Ward Cluster  | SW Ward Cluster   | SE Ward Cluster  |
|---|--|---|--|
| <ul style="list-style-type: none"> <li>• Bethnal Green</li> <li>• Spitalfields &amp; Banglatown</li> <li>• St Peter's</li> <li>• Weavers</li> </ul> | <ul style="list-style-type: none"> <li>• Bow East</li> <li>• Bow West</li> <li>• Bromley North</li> <li>• Bromley South</li> <li>• Mile End</li> </ul> | <ul style="list-style-type: none"> <li>• Shadwell</li> <li>• St Dunstons</li> <li>• St Katherine's &amp; Wapping</li> <li>• Stepney Green</li> <li>• Whitechapel</li> </ul> | <ul style="list-style-type: none"> <li>• Blackwall &amp; Cubitt Town</li> <li>• Canary Wharf</li> <li>• Island Gardens</li> <li>• Lansbury</li> <li>• Limehouse</li> <li>• Poplar</li> </ul> |

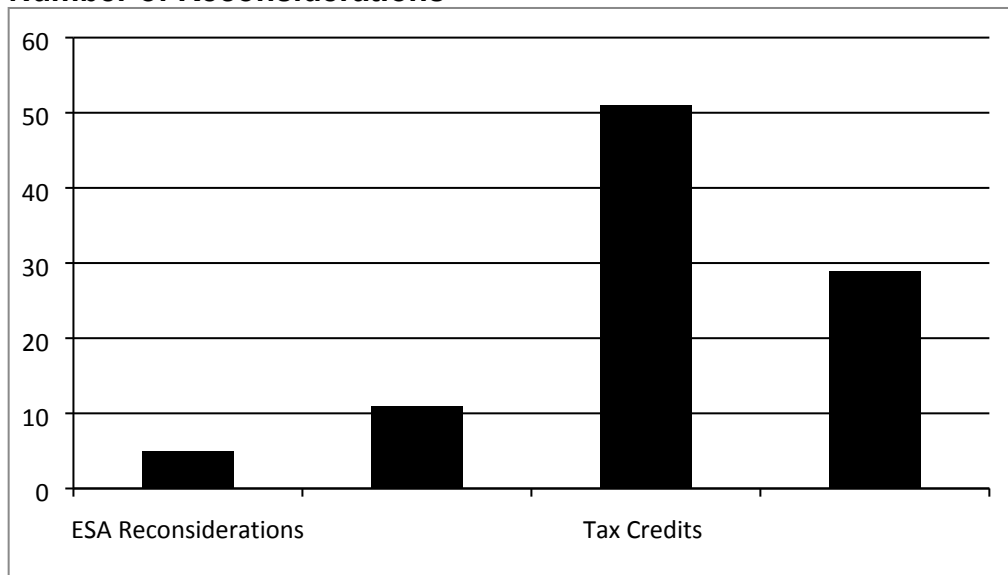
### Social Welfare Advice Services Project Portfolio – D&R

| No. of live projects – Jul-Sep 16 | No. of projects classed as <b>GREEN</b> | No. of projects classed as <b>AMBER</b> | No. of projects classed as <b>RED</b> |
|-----------------------------------|---|---|---------------------------------------|
| 11                                | 11                                      | 0                                       | 0                                     |

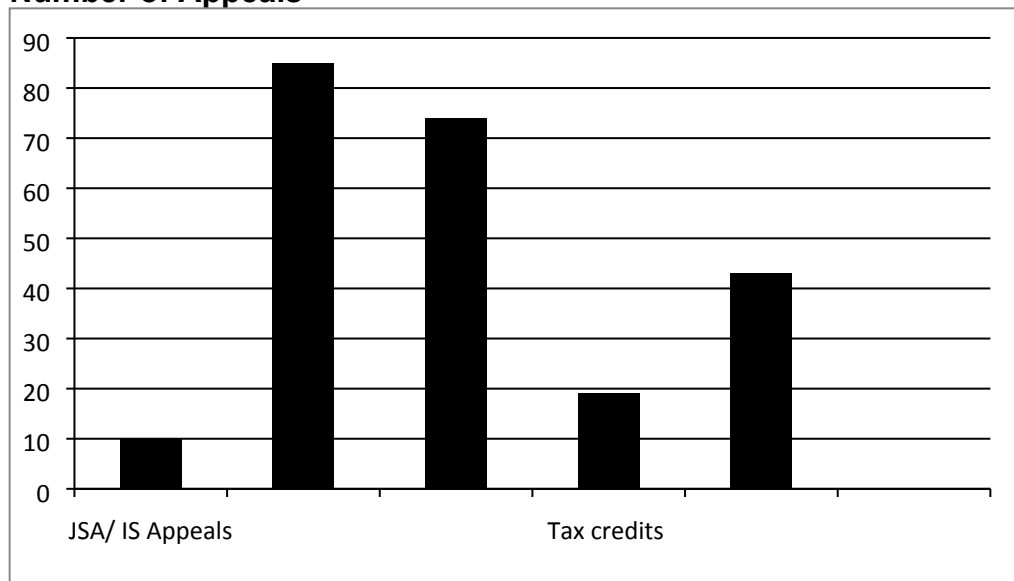
There 11 active projects in this category; all of which are classed as 'Green' and are on course to meet the agreed expenditure targets, service outputs and outcomes as indicated in monitoring reports received.

**Key Social Welfare Advice outcomes achieved in the quarter include:**

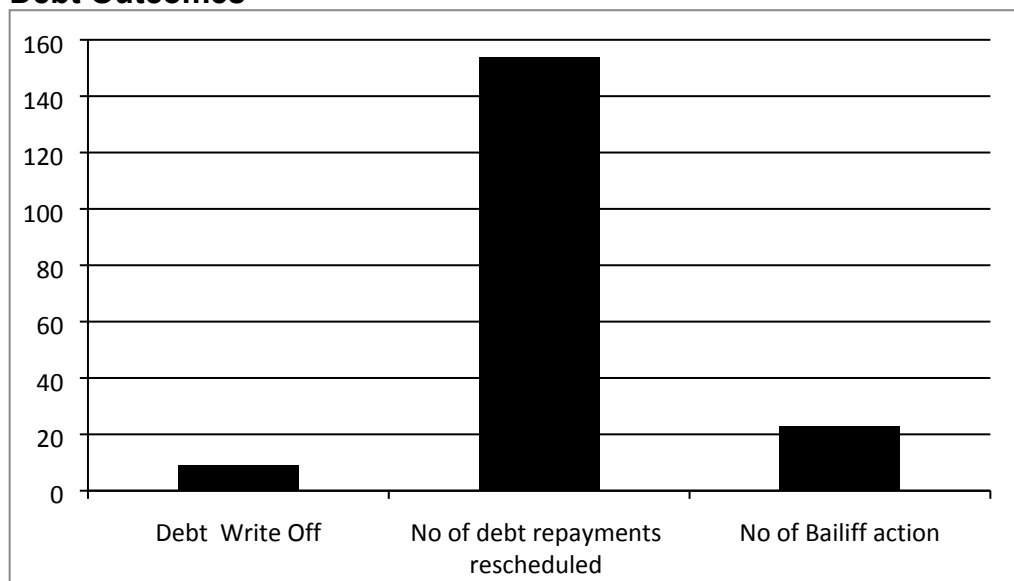
#### Number of Reconsiderations



### Number of Appeals



### Debt Outcomes



### Housing Outcomes

